

LIBERCOURT

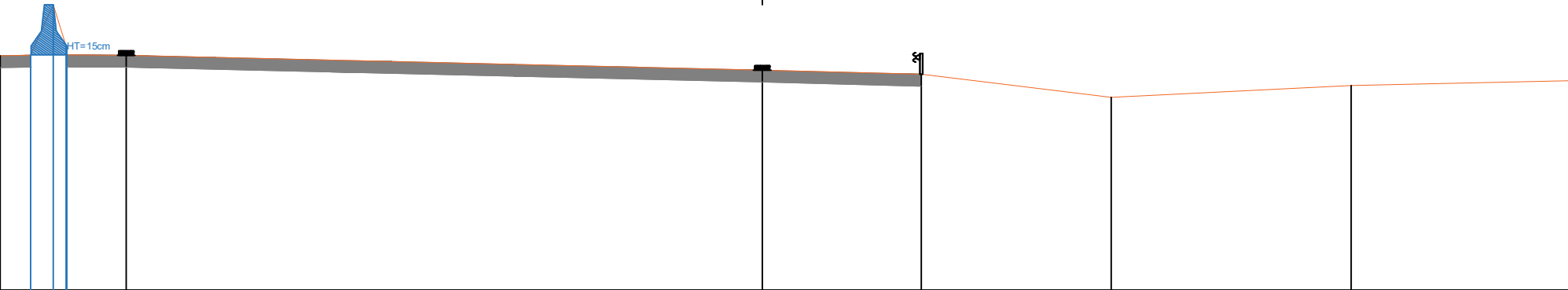
Autoroute A1

Sens Paris -> Lille

Profil P277

indice: 1

Sens Paris -> Lille



Echelle des longueurs : 1/100
Echelle des altitudes : 1/100

PC : 19.00 m

Altitudes TN	22.94	22.95	23.60	22.96	22.95	22.70	22.63	22.24	22.44	22.52
Distances à l'axe TN	-12.826	-12.316	-11.933	-11.708	-10.707	0.000	2.677	5.876	9.913	13.575
Distances partielles TN	0.510	0.383	0.225	1.001	10.707	2.677	3.199	4.037	3.662	